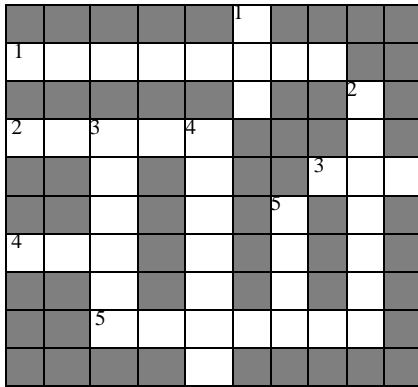


Quiz time!

Answers to the quiz are on page 51

1) A medical crossword



Across

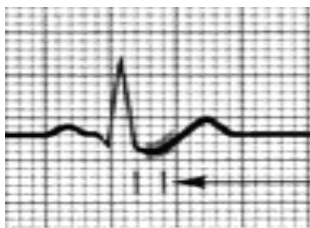
1. X-linked disorder where Gower's sign is observed
2. This test is based on principles of immunology
3. An abbreviation of a name of a catecholamine metabolite used in diagnostic medicine

4. A 3D imaging modality
5. An indispensable tool for a surgeon

Down

1. A marker of auto-immune disease
2. A statistical distribution seen in nature
3. An extra-intestinal manifestation of inflammatory bowel disease
4. A respiratory disease feared for its application as a biological weapon
5. A method used in artificial ventilation of patients

2) Picture Quiz



1. What is the ECG change that is seen in these three ECGs?
2. What is the difference between each of these three ECGs?
3. A 70 year old man with a history of diabetes mellitus is admitted to your casualty ward with central chest pain for more than 20 minutes. What is the ECG tracing among these three that will support your diagnosis at a very low error rate?

Answers to the quiz (from page 38)

Question 1

Across

1. Duchenne
2. ELISA
3. VMA
4. CAT
5. Scalpel

Down

6. ANA
7. Bimodal
8. Iritis
9. Anthrax
10. PEEP

Question 2

1. ST depressions
2.
 - a. 1st ECG - upsloping ST depression
 - b. 2nd ECG - horizontal ST depression
 - c. 3rd ECG - downsloping ST depression
3. In diagnosing acute coronary syndrome with ST depressions horizontal depressions will give you the least error rate.